

# ALUCO™

Steel Look Collection



Interior • Exterior • Doors • Screens • Windows



# STEEL LOOK COLLECTION

## CONTENTS

<b>Aluco Elite Exterior Steel Look Collection</b> .....	<b>12</b>	<b>Aluco Interior Steel Look Collection</b> .....	<b>38</b>
Elite Features 1 - 12.....	13 - 29	Interior Steel Look Single Doors.....	44
Elite Key Features.....	30	Interior Steel Look Double Doors.....	45
Elite Furniture Range.....	32	Interior Steel Look Sliding & Pocket Doors.....	46
Elite Colour Range.....	36	Interior Steel Look Screens & Partitions.....	48
		Key Features.....	50
		Furniture Range.....	52
		Colour Range.....	54



## OUR EXQUISITE BESPOKE WINDOWS DOORS AND SCREENS

The Aluco Collection offers exceptional steel look architectural glazing solutions, meticulously designed to transform your living space into something truly extraordinary.

From our iconic steel replica range of exterior windows and doors, through to our stunning interior doors and screens, and our versatile Bi-Folding door range, Aluco offer a unique solution to you and your home.

**ALUCO™**  
Steel Look Collection

### Attention To Detail

Every product in the Aluco Collection is designed and built specifically for each individual customer, handcrafted by our skilled craftsmen to your exact specification.

Our ethos is one of exceptional design and product performance, created to compliment the home and lifestyle of our customers. We believe in producing architectural solutions that will delight customers now, and for years to come.





## DISTINCTIVE DESIGN

### Designing Spaces to Enhance Your Home

Aluco have an exceptional reputation, where attention to detail and superb British craftsmanship is second to none.

We specialise in the design and manufacture of iconic steel effect windows, doors and screens covering both interior and exterior applications, for truly luxe living.

The Aluco Collection is available in an extensive selection of colour and finish options, including a stunning range of traditional and contemporary furniture and ironmongery styles and designs to compliment your home.



# THE SUBTLE DEGREE OF DIFFERENCE



## Creating Lasting Impressions Through Interior Design

Attention to detail is at the core of the Aluco experience. Our range of exceptional windows and doors are designed to ensure every detail is captured.

Slim and equal glass sightlines maximise glass area and provide uniform appearance to folding doors; a range of colour furniture to seamlessly match your windows and door frames; dual colour finishes to allow different internal and external designs; and handle designs to suit every room in your home. All can be tailored into every Aluco product to suit your needs.





ELEGANT  
LUXURY  
UNIQUENESS  
ICONIC  
INDUSTRIAL  
TIMELESS  
ART DECO  
STEEL LOOK



INTRODUCING

ALUCO

ELITE™



HANDCRAFTED TECHNOLOGY MEETS BEAUTIFUL AESTHETICS

EXTERIOR STEEL LOOK COLLECTION



# THE MOST EXCLUSIVE COLLECTION OF STEEL LOOK DOORS & WINDOWS

## Unique Design, Futureproof Performance

Individually designed to adhere to Aluco's exacting principles, our luxury, bespoke external doors and windows blend specialist knowledge with the finest materials and craftsmanship to realise the ultimate next generation products.

Our signature ALUCO Elite collection is inspired by traditional, industrial steel windows and the highly sought after Scandi-style.

Combining cutting edge technology with artisan designs and craftsmanship, we create striking but minimalist metal frames, featuring slim sightlines and the iconic grid-like designs, with styles that range from classic heritage to contemporary. These versatile windows and exterior doors have the ability to completely transform your home, letting in more light and creating luxury living spaces.

**Discover the Elite Features that create unique accessibility and design advantages not available on other products.**



## ELITE FEATURE 1

**High Performance U Value Incorporating 28mm Double Glazed (1.4 U-Value) or 44mm Triple Glazed (1.0 U-Value) For Optimum Thermal Performance**

# BEST PERFORMING

Save energy, reduce your carbon footprint, and lower utility bills with our energy-efficient doors and windows. Enjoy a more comfortable, eco-friendly home while contributing to a sustainable future, whilst also keeping your houses aesthetic.

ELITE FEATURE **2**

Super Slim Rolled Steel Look Design

# SUPER SLIM, SUPER LUXURY

Our design perfectly replicates the timeless elegance of traditional steel windows, combining classic charm with modern innovation. The result is a super-slim, luxury look that enhances any space, offering both aesthetic beauty and high performance. Enjoy the sophistication of steel with the benefits of contemporary design.





ELITE FEATURE **3**

Discreet Trickle Ventilation and Overhead Weather Bar Combined

# UNIQUE DETAIL & DESIGN

Our windows combine the functionality of efficient ventilation with the elegance of traditional design. Featuring an aesthetic that faithfully replicates the weather bar detail, they offer a perfect balance of form and function—providing optimal airflow while maintaining a sleek, timeless look that enhances your home's character.



ELITE FEATURE **4**

Each Corner Double Cleated For Strength and Durability As Standard

# SUPERB STRENGTH & DURABILITY

Each corner joint is crafted using the most robust and durable techniques, ensuring exceptional strength and long-lasting performance. This meticulous attention to detail not only enhances the integrity and durability of the structure but also ensures that every joint maintains its visual appeal, offering both style and longevity.



ELITE FEATURE **5**

**Dedicated Adjustable Barrel Door Hinges**

# EXCLUSIVE DESIGN DETAILS

Each door is meticulously handmade with four adjustable hinges, strategically positioned to optimize weight distribution. The two top hinges are carefully placed to ensure balanced support, enhancing the door's durability and smooth operation for long-lasting performance and a flawless fit.



ELITE FEATURE **6**

**All Transoms Line Through In Side Panels Without The Need Of Dummy Sash**

# EVEN MORE EXCLUSIVE DESIGN DETAILS

Our design delivers super-slim symmetry while maximizing natural light. With equal sightlines throughout, the windows offer a sleek, modern aesthetic that seamlessly blends style and functionality, creating a bright and balanced atmosphere in your home.



ELITE FEATURE 7

Super Slim 38mm Transom

# SO SLIM, SO DURABLE

The super-slim 38mm transoms provide exceptional structural rigidity while allowing maximum natural light to flood your space. Being one of the slimmest individually glazed transom bar doors on the market, gives it the perfect balance of strength and openness, whilst enhancing both the aesthetic and functionality of your home, creating a bright, airy environment without compromising durability.



ELITE FEATURE 8

High Security Black 3-Star Flush Cylinder As Standard

# HEIGHTENED PEACE OF MIND FOR YOUR HOME

Offering the maximum level of security for entrance doors. The cylinder is specifically designed to protect from unauthorised access by burglars. The 3-Star cylinder is engineered with a unique sacrificial point, which when tampered with externally sets an interlocking cam mechanism into action, preventing any further damage to the internal parts of the cylinder, whilst still keeping the lock operable from the inside.



## ELITE FEATURE 9

Top Glass Panel Featured As One Frame

# IT'S THE UNIQUE DETAILS THAT COUNT

The top glass panel on our external doors is seamlessly integrated into a single frame, enhancing the door's sleek, unified appearance. The super-slim frame design ensures perfect symmetry with the side frames, creating a balanced and modern aesthetic.



## ELITE FEATURE 10

Opening Doors Designed Up To 2.4m High

# MAXIMISE YOUR VIEW

Elite exterior doors just got taller. Through design innovation we can make single and French doors up to 2400mm tall before needing to introduce additional strengthening bars above. The 2400mm maximum height can be achieved using our 38mm transoms. Slim profile sightlines equals maximum light ingress.

ELITE FEATURE **11**

Unique Floating Lock Option  
Incorporating 20mm or 25mm Astragal Bar

# THE ULTIMATE IN STEEL LOOK

To further enhance the Aluco Steel Look collection a 'Floating Lock' design is available on all interior and exterior single and double doors. This unique design enables a full sheet of glass to be incorporated and thus remove the need for any glazing bars. Alternatively, this design can also be chosen along with slim 20mm or 25mm horizontal glazing bars above and below the floating lock, the choice is yours.\*

\* Max height of doors with floating locks, 20mm or 25mm bars is 2200mm



**The glazing bars are available in:**

- SLIM BAR 25MM
- SUPER SLIM BAR 20MM
- NO BARS

ELITE FEATURE **12**

Our Most Popular Colours Are Black (9005M) & RAL 7021M. We Offer Over 200 RAL Powder Coated Colours On Request

**EXQUISITE,  
REFINED,  
BESPOKE**

Giving the product a long-lasting durable finish.



# ALUCO ELITE™ EXTERIOR STEEL LOOK COLLECTION

The Aluco steel look system uses modern high performing materials to create traditional steel look style doors, screens, partitions and windows. Delivering classic industrial finish products with slim sightlines, to provide maximum natural light whilst delivering thermal, security and weathering performance.



Please ask your sales advisers for more details on the following unique features & benefits of the Elite system.

## Key Features

UNIQUE AND EXCLUSIVE SYSTEM

SUPER SLIM GLAZING BARS  
AVAILABLE 38mm, 25mm AND 20mm

LOW U-VALUES FOR OPTIMUM INSULATION

STRUCTURAL BAY POLES AVAILABLE

FIRE ESCAPE HINGES ON WINDOWS

HIGH SECURITY - 3\* CYLINDER AS STANDARD

ADJUSTABLE BUTT HINGES ON DOORS

LOW MAINTENANCE - POWDER COATED PAINT  
FOR DURABILITY AND QUALITY

BESPOKE AND HANDCRAFTED IN THE UK

WE CAN ACHIEVE DIFFERENT SHAPES -  
IE RAKED AND ARCHED SCREENS

CONCEALED TRICKLE VENTS

OVER 200 DIFFERENT RAL'S AVAILABLE

SUPER SLIM ROLLED STEEL LOOK DESIGN

EACH CORNER JOINT IS DOUBLE  
CLEATED FOR STRENGTH AND DURABILITY

DOORS ABLE TO BE MADE IN ONE FRAME  
UP TO 2400mm TALL

## Check List

Thermal broken powder coated steel look frames

Aluco  Steel

28mm double glazed and single glazed options

Aluco  Steel

Multi-point security locking to all windows and doors

Aluco  Steel

Comprehensive shaped frame options

Aluco  Steel

Interior and exterior door, screen, partition and window configurations

Aluco  Steel

Equal glass sightlines for all products

Aluco  Steel

Range of furniture styles and options

Aluco  Steel

Air, water and wind resistant thanks to a dual seal system

Aluco  Steel

Manufactured in the UK

Aluco  Steel



# EXTERIOR STEEL LOOK FURNITURE

## Brompton & Newbury Handles

The Brompton & Newbury of window and door handles are available in a choice of bulb and textured, knurled surface designs and are all available in a range of 5 finishes. All furniture options are perfectly suited, so window and door options will match perfectly.



## Art Deco Range

For that truly Art Deco look, this range of suited window and door handles are available in a range of 4 finishes.



## Ventiss Range

The Ventiss range of window handles offers a multitude of contemporary handle designs and colour combinations, the 360 and Teardrop designs.



## Aluco Steel Look Window Handle

Replicates the appearance of a traditional cockspur handle and perfectly compliments the steel look window design. Available in:

- SATIN CHROME
- GUNMETAL
- ANTIQUE BLACK
- DARK BRONZE

# EXTERIOR COLLECTION FURNITURE

## Window & Door Range

The range of standard window and door handles are both available in colour matched white, black, gold and chrome finishes. Standard on all Exterior steel look window and doors.



# COLOURS THAT INSPIRE

## FOR THE ALUCO EXTERIOR COLLECTION

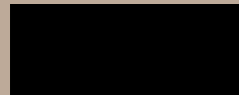
### RAL Colour Options

Let your imagination run wild and choose any colour from the RAL colour option range.

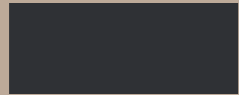


## STANDARD COLOURS

Our range of smooth flat finishes that are the most popular colours of choice.

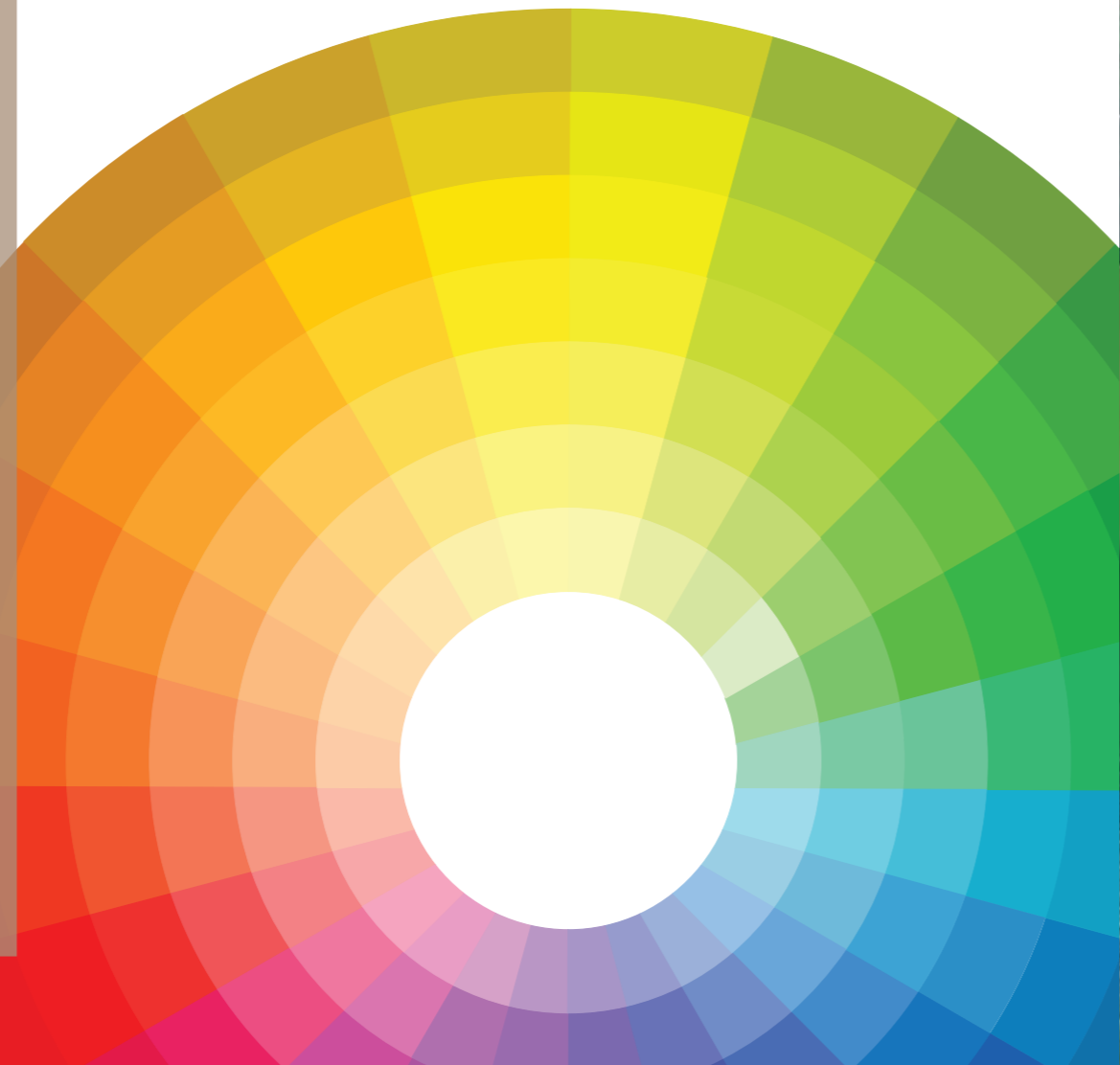


Matt Black - RAL 9005



Matt Black Grey - RAL 7021

Having selected the finish for your project, simply speak to your supplier and they will arrange for a sample to be sent to you. Although the colours in this brochure are a very accurate representation, they are not 100% accurate.





SINGLE  
DOORS  
DOUBLE  
DOORS  
FRONT FACING  
SLIDER  
POCKET  
SLIDERS  
SCREENS



ALUCO™  
INTERIOR  
STEEL LOOK  
COLLECTION



# LUXURY STEEL-LOOK INTERIOR DOORS

## It's The Inside That Counts

Every door in the Aluco collection is designed and handcrafted by our skilled craftsmen. Our ethos is one of the exceptional design and product performance, created to compliment the home and lifestyle of our customers. We believe in producing architectural solutions that will delight customers now, and for the years to come.

# INTERIOR DOORS, SCREENS AND PARTITIONS RANGE

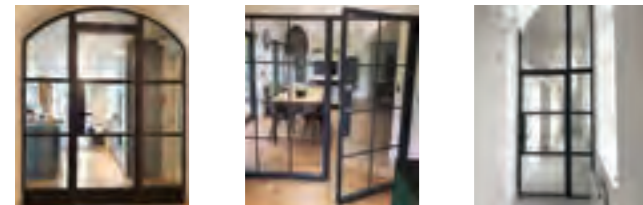
The Aluco steel look interior system is a unique bespoke design, created to give you a traditional steel look style of doors, screens and partitions. Delivering classic industrial finish products with slim sightlines, to provide maximum natural light whilst delivering stylish design and practical design choice for any room or lifestyle.

Our interior doors and screens will enhance any home, with classic details like slim horizontal and vertical glazing bars, bottom kick plates, rose back plate handles as well as the bespoke Floating Lock. All these go to provide you with the iconic industrial finish, available as single and double glazed options.



# INTERIOR STEEL LOOK SINGLE DOORS

With classic details like handle back plates, slim horizontal and vertical glazing bars, bottom kick plates, rose back plate handles as well as the bespoke Floating Lock.

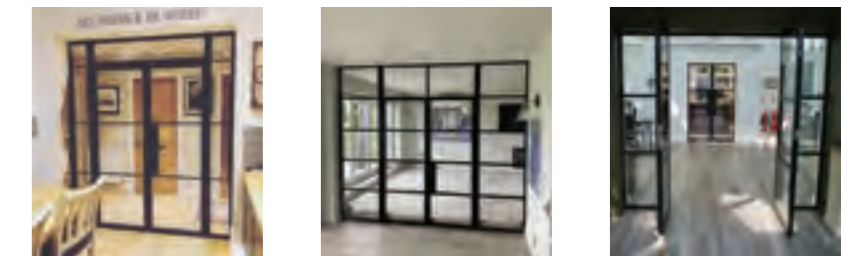


## UPGRADE TO A SUPER SLIM BAR 20MM FLOATING LOCK

To further enhance the Aluco Steel Look collection a 'Super Slim Bar 20mm Floating Lock' design is available on all interior single and double doors.

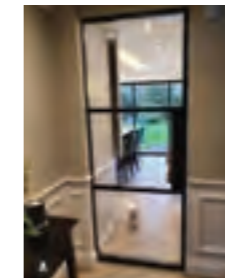
# INTERIOR STEEL LOOK DOUBLE DOORS

Interior double doors have the same features as the single door. The door meeting stile is a one-piece design for added strength and is provided with a range of finger-bolts available in a range of lengths for easier operation and reach.

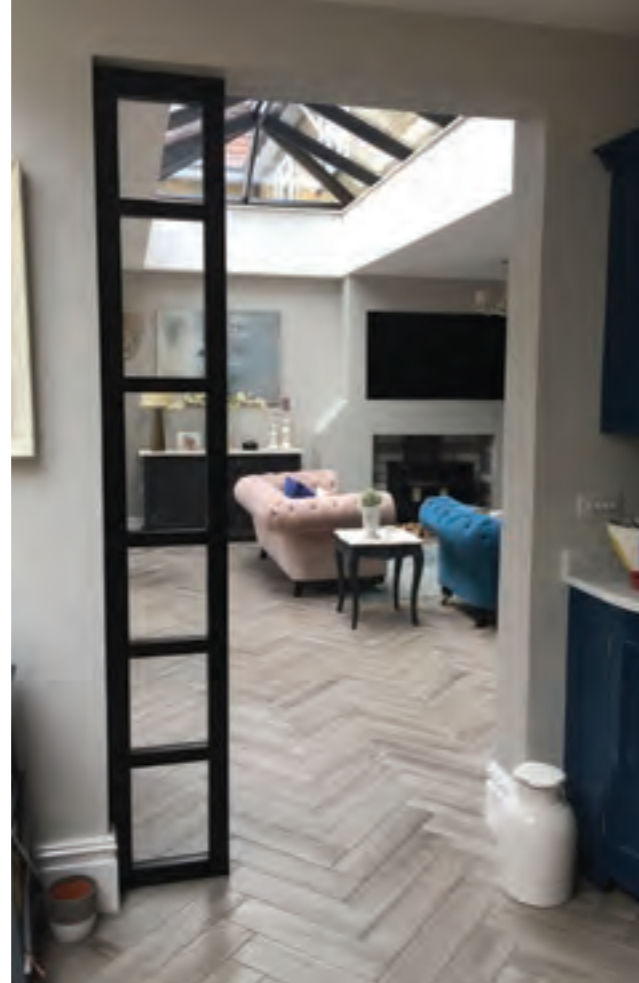


# INTERIOR STEEL LOOK SLIDING & POCKET DOORS

Offering a classic industrial finish with wide lock body, deep bottom rail and slim transom bars, the classic art deco steel look finish. Providing an alternative design choice to any room.







## INTERIOR STEEL LOOK SCREENS & PARTITIONS

Aluco interior screens and partitions use the same core components as the doors but are manufactured with slim 33mm outer-frame. They also incorporate the standard 33mm transoms and are also available with ultra-slim 20mm Astragal bars which can accommodate various style choices. Clear and obscure glass designs are also available.

Our interior screens add an extra dimension to your room without closing any of your room off to natural daylight.

# ALUCO™ INTERIOR STEEL LOOK COLLECTION

The Aluco steel look interior system is a unique bespoke design, created to give you a traditional steel look style of doors, screens and partitions. Delivering classic industrial finish products with slim sightlines, to provide maximum natural light whilst delivering stylish design and practical design choice for any room or lifestyle.



## Key Features

- Powder coated solid chambered aluminium extrusion with no thermal break
- Flush 150mm wide lock body
- Circular back-plate escutcheon handle ranges
- Lock with one piece keep
- Deep bottom rail
- Slim 33mm transom
- Flush bottom sash with double woolpile seal
- 4mm toughened glass as standard
- Minimum 4 No slim knuckle hinges
- Q-lon perimeter door seal
- All corner joints glued and crimped

## Check List

Solid aluminium chambered profile

Aluco  Steel

150mm wide flush lock body

Aluco  Steel

Circular backplate to handle and bathroom locks

Aluco  Steel

Lock with adjustable tension and dust pocket tidy to keep

Aluco  Steel

150mm one piece - flush deep bottom rail

Aluco  Steel

Suited door and sidelight transoms

Aluco  Steel

Flush bottom sash with double woolpile seal

Aluco  Steel

4mm toughened glass as standard

Aluco  Steel

Minimum number of 4 slim hinges, traditionally fitted with 2 at the top for greater strength

Aluco  Steel

Q-lon perimeter seal for quiet soft closing action

Aluco  Steel

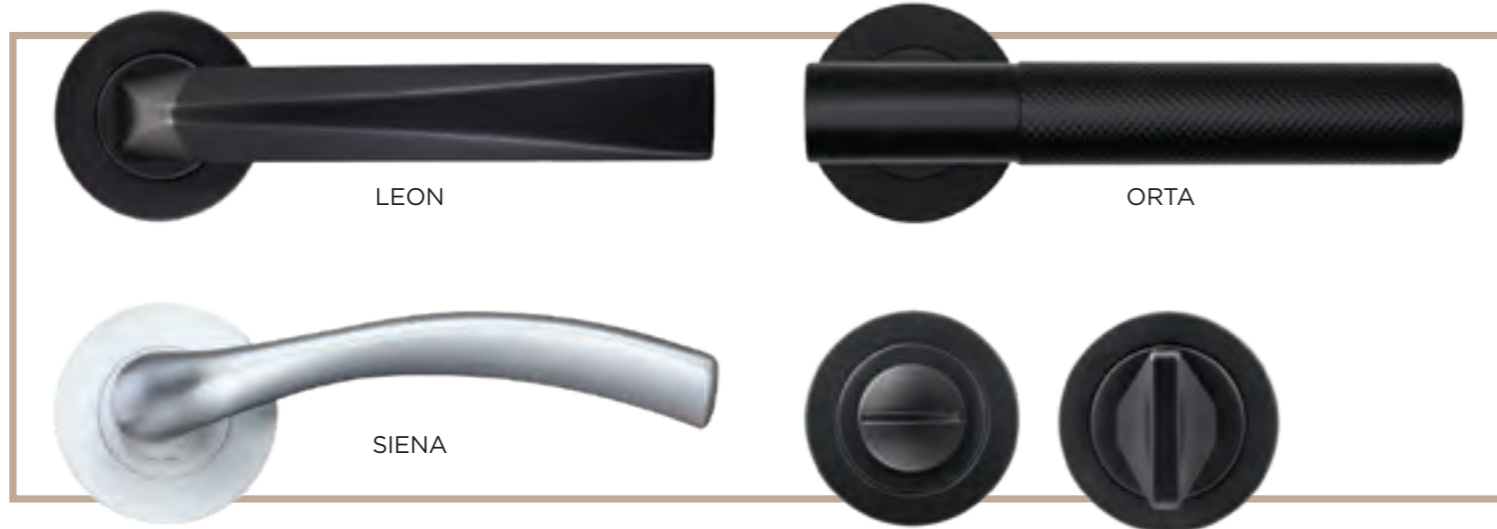
Double crimped and glued corner for added strength and durability

Aluco  Steel

# INTERIOR STEEL LOOK FURNITURE

## Single & Double Door Range

- 50 x 8mm circular Rose
- Lever handle with separate bathroom escutcheon
- Sprung handle
- Leon & Orta - Black & Satin finishes
- Siena - Black, Satin & Brass finishes.



## Double Door Finger Bolt - flush dust excluding pockets

- Wood and concrete options
- Flush Fitting
- Gold, Chrome & Satin Chrome finishes.



## Floor Mounted Door Stop

- 48mm projection
- Concealed-fix
- Satin Chrome & Chrome finishes.



## Wall Mounted Door Stop

- 80mm projection
- Concealed-fix
- Satin Chrome & Chrome finishes.

# INTERIOR STEEL LOOK FURNITURE

## Sliding Door Handle

- Rectangular recess pull
- Flush fitting
- Black, Satin Chrome & Antique Brass finishes.



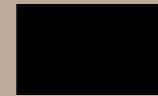
# COLOURS THAT INSPIRE

FOR THE ALUCO INTERIOR COLLECTION

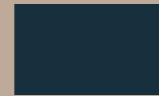


## STANDARD COLOURS

Our range of smooth flat finishes that are the most popular colours of choice.



Matt Black  
RAL 9005



Anthracite Grey  
RAL 7016

## SPECIAL COLOURS

Choose any colours from the RAL colour option range.



Having selected the finish for your project, simply speak to your supplier and they will arrange for a sample to be sent to you. Although the colours in this brochure are a very accurate representation, they are not 100% accurate.

# The ALUCO™ Experience

The first step in your journey is to visit one of our Aluco retail partner showrooms. See for yourself the exceptional quality and design of our window and door collection, discover our range of finishing touches and discuss your project with an experienced designer.

When you choose a product from the Aluco Collection you're choosing more than just a supplier, you're choosing a dedicated team, unrivalled product performance and an unsurpassed passion for quality.

Contact us to put you in touch with your Local Retail Showroom Partner  
**T: 01480 436578**  
**E: [info@aluco.co.uk](mailto:info@aluco.co.uk)**  
**[www.aluco.co.uk](http://www.aluco.co.uk)**

Follow us on Instagram



@aluco.uk





**ALUCO™**  
Steel Look Collection

